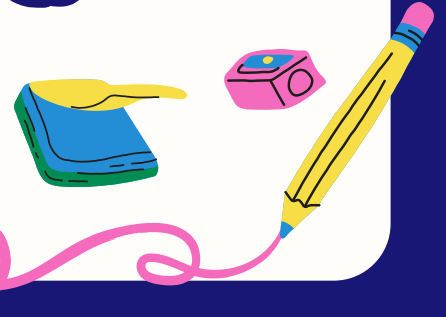


Eskdale School

February
2025



Upcoming Events

Meet the Teacher - 18 February

(see information on page 5)

CC Softball - 5 March

Teacher Only Day - 7 March

(School closed)

Optimist Yachting - 11-14 March

(Year 7 Only)

Swimming Sports - 18 March

(Children 8 years and over @ Onekawa Aquatic Centre)

Learning Conferences - 25 March

(School closes at 12.30pm - buses run at the earlier time)

Learning Conferences - 26 March

(School finishes at normal time)

CC Swimming - 26 March



Welcome Back!

The week started well and has continued to run smoothly! Thank you for your support in helping this happen.

The children bouncing in the gate with a smile on their face on Monday morning was great to see. The energy the children bring to a school is what makes it a special place to be and work. We are certainly looking forward to the year ahead and we enjoyed welcoming 13 children new to our school at our Mihi Whakatau on Monday. A number of these were five-year-olds having their first ever day at school.

We look forward to working constructively with all families this year to ensure the best possible outcome for all children. The Home/School partnership is critical in every child's success so we welcome information you want to share about your child or if you want to find out about something happening at school I encourage you to reach out.

Eskdale School Teaching Team and Support Staff: The teaching team and support staff team is shared below. A key aspect of the school home partnership is communication. If you ever have any concerns, worries, wonderings please make contact with the classroom teacher in the first instance. The sooner we know the sooner we can attend to issues and can ensure little things don't become big things. If you ever feel that an issue hasn't been addressed, please contact either one of the Team Leaders, Deputy Principals or myself - my door is always open.

During the school day an email is often the most effective way of getting in touch with a teacher.



Our Staff

Principal – Tristan Cheer
Deputy Principal – Mike Moriarty
Deputy Principal – Tineke Hill

principal@eskdale.school.nz
mikem@eskdale.school.nz
tinekeh@eskdale.school.nz

Phase 1:

Weka – Sue Stilwell (Team Leader)
Kotare – Emma Booth
(Tues, Wed, Thurs & Fri)
Kotare - Mike Moriarty
(Monday)
Korimako – Debbie Bramwell
Tui – Jo Drager
Ruru – Isaac James

sues@eskdale.school.nz
emmab@eskdale.school.nz
mikem@eskdale.school.nz
debbieb@eskdale.school.nz
jodr@eskdale.school.nz
isaacj@eskdale.school.nz

Phase 2:

Kea – Bryony Lovatt
Karearea – Amy Coker
Hihi – Catherine Lee
(Mon, Tues & Wed)
Hihi – Kate Aiken
(Thurs & Fri)
Kereru – Kim Wallace (Team Leader)
(Mon, Tues, Wed & Thurs)
Kereru – Tineke Hill
(Friday)

bryonyl@eskdale.school.nz
amyc@eskdale.school.nz
catherinel@eskdale.school.nz
katea@eskdale.school.nz
kimw@eskdale.school.nz
tinekeh@eskdale.school.nz

Phase 3:

Kakao – Alex Jones (Team Leader)
(Tues, Wed, Thurs & Friday)
Kakao – Tineke Hill
(Monday)
Karoro - Jess Rodda
Toroa – Jahni McLean

alexj@eskdale.school.nz
tinekeh@eskdale.school.nz
jessr@eskdale.school.nz
jahnim@eskdale.school.nz

CRT – Catherine Jurgens

catherinej@eskdale.school.nz

Moira Anderson - Teacher Aide
Sandra Rolls - Teacher Aide

moiraa@eskdale.school.nz
sandrar@eskdale.school.nz

Office Administrator - Mary Doohan
Office Administrator - Maree Baird

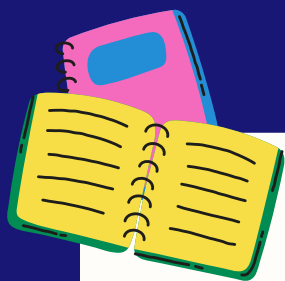
admin@eskdale.school.nz
mareeb@eskdale.school.nz

Sports co-ordinator - Maree Baird

sport@eskdale.school.nz

Caretaker - Jos van Dijk

caretaker@eskdale.school.nz



Open Morning & Afternoon: This year you have the opportunity to come and have a walk through our new spaces while the students are here in action.

On Tuesday, 18 February you are welcome to come for a walk through the classes and see how they operate during the school day. In the morning you can visit from 9.00am-10.00am and in the afternoon 1.45pm-2.45pm.

See flyer on Page 5

Meet the teacher night: Also on the 18 February we will have our meet the teacher evening. Times for this are:

Junior Classes - 5.00pm - Weka, Kōtare, Korimako, Tui and Ruru

Middle School Classes - 5.30pm - Kea, Kārearea, Kererū and Hihi

Senior School Classes - 6.00pm - Kakao, Karoro and Toroa

See flyer on Page 5

Building Projects: Over the summer break the four temporary classrooms were removed and work is now underway preparing for a new astro-turf court. Work is also progressing well internally on the old Year 7/8 block which is being transformed into our new administration block which will include reception, office space and staffroom.

Once the new administration block is finished and we have moved out of the old admin building, that will then be transformed in to Weka class and after six and half years we will regain the use of our school hall for the purpose it was built.

The students are enjoying their new spaces and making the most of the opportunities these present.



Attendance: We know that students attendance has a direct correlation to student achievement and success at school. Nationally there has been an increased focus on student attendance and the Ministry of Education has introduced a new approach to attendance called STAR - (Stepped Attendance Response) which aims to have all students attending school regularly (90% of the time).

As part of this approach, that the school will be following, you can expect contact from your child's teacher once they are absent for over five days in any one term. We totally understand that at certain times of the year this cannot be avoided due to sickness etc however we still need to follow the guidelines and will touch base. Thank you for support with this.

Hats: Students are required to wear a hat this term. Please remind your child to bring their hat and to apply sunscreen before leaving home. There has been an excellent uptake of this to start the year - Thank you.

School Fees/Donations: We have been able to keep our school fees/donations the same again for the fourth year running.

Our 2025 school fees/donations are set at \$40.00 per term. These form an integral part of ensuring we can provide all the resources we want to for our students. The funds provided by the Ministry of Education do not cover all of the resources we believe are essential for every child to experience success.

Over the past 12 months we have used the school donations for increased teachers in classes (reducing teacher to student ratio), increased literacy support time and purchased additional learning resources.

2025 Recommended School Fee/Donation: \$40.00 per term; or

- Individual Child \$160.00 per year discounted if paid in Term 1 to \$140.00.
- Two Children \$320.00 per year discounted if paid in Term 1 to \$280.00.
- Three or more children \$480.00 per year discounted if paid in Term 1 to \$420.00.
-

Thank you for your support with this.

I look forward to working with you over the coming year to make 2025 a positive one for each child, their family and our wider community.

Tristan



Open Day



All of our wonderful learning environments are open for you to walk through, have a good look around and see how we operate! The teachers will be focusing on their classroom programme, so if you have any questions or queries, please come along to our 'Meet the Teacher' night, that same evening.

Tuesday 18th February

9:00am-10:00am or 1:45pm-2:45pm

In your child's classroom

5:00pm Te Kākano (Years 0-3)

5:30pm Te Puāwai (Year 4-6)

6:00pm Hauhake (Year 7-8)



Eskdale School Absentees

A reminder that if your child is absent from school to contact the school office prior to 9.00am.

This can be done in a number of different ways:

Email: absence@eskdale.school.nz

Text: 021 114 5845

Phone: 06 836 6845 (option 1)

App: Skool Loop

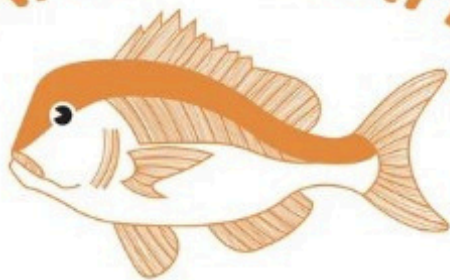
Eskdale School Sports

All sports notices and information regarding upcoming sports is displayed on our school website.

Any other Sport queries (eg Coastal Cluster) please contact
Kim Wallace:
kimw@eskdale.school.nz

Any Team Sport (out of school time) queries please contact
Maree Baird:
sport@eskdale.school.nz

SNAPPER CAFE



BAYVIEW

The perfect setting for coffee, breakfast, brunch or lunch!

We have a fully fenced courtyard that is both child and dog friendly as well as seating inside for those cooler days!

**Open Wednesday - Sunday
8.30am - 2.30pm**

**Show this advert and receive a HALF PRICE muffin
with any coffee purchased**

Located at Napier Beach TOP 10
10 Gill Road, Bay View