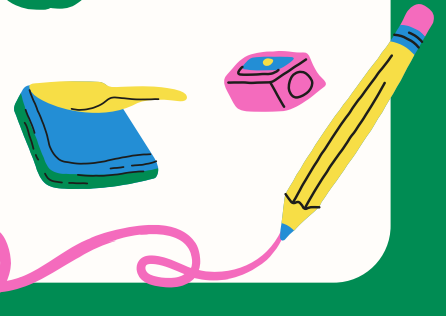


Eskdale School

March
2025



Upcoming Events

Swimming Sports - 18 March

(Children 8 years and over @ Onekawa Aquatic Centre)

Learning Conferences - 25 March

(School closes at 12.30pm - buses run at the earlier time)

Learning Conferences - 26 March

(School finishes at normal time)

CC Swimming - 26 March

Mitre 10 Tough Kid - 3 April

(<https://events.onetime.sport/event/1661>)

Switch Gala Day - 4 April

Athletics Day - (date TBC)

Teacher Only Day - 30 May

(School Closed)

Kings Birthday - 2 June

(School Closed)

Matariki Day - 20 June

(School Closed)

Last Day Term 2 - 27 June

Welcome to the March Newsletter!!

The year has continued to go well with students quickly connecting with their new teacher and their new space. We seemed to have quickly moved from 1st gear to 6th and the students are focused and working hard in their classes. I am sure there will be some children coming home with a little bit of cognitive overload as they are being challenged with lots of new learning during the school day.

Curriculum: The teaching team has been working through the changes as part of the refreshed Math and English Curriculum, and these are being implemented across the school. The structured approach in the refreshed English Curriculum mirrors our approach to Structured Literacy which we introduced last year. The Math Curriculum also follows a more structured approach, and we are transitioning to this whilst continuing to utilise many of the successful strategies we have used previously- we know our children do well at Math.

A key change from the old Curriculum to the new Curriculum is that the learning is now broken down by year levels as opposed to Curriculum Levels. This ensures learning is sequential and consistent for all children at the same year level across the country. It is also positive to see that there is a higher expectation being placed on all students at each year level than what was expected previously.





Optimist Yachting: This week our Year 7 students are into their Optimist Yachting at Pandora Pond. I managed to get along to join the group on Wednesday and we had a great time. Whilst the wind was scarce to start with the student's enthusiasm wasn't! They were all keen to have a go and hit the water as soon as they had finished rigging up their yachts. They also enjoyed exploring the area for crabs and fish. As you can see from the photos the wind was low on Tuesday too and some of the yachts even required a special Mr Jones tow after getting stuck in the doldrums.

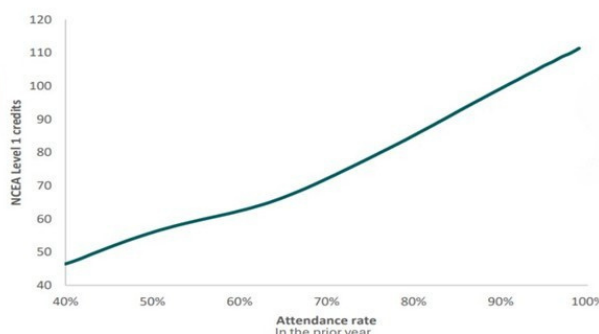
Parent/Teacher Learning conferences:

These are coming up in week eight on Tuesday 25 March and Wednesday 26 March. This term the focus for these conversations will be around how your child has settled into the year, their initial learning strengths observed and areas to further develop. The information you can share about your child is also important as you know them best!



To allow for the learning conferences we will finish school at 12.30pm on Tuesday 25 March and the buses will run at this earlier time. School will finish at the normal time on Wednesday 26 March. The online booking schedule will be shared on Monday 17 March (Week 7). Please make sure you book in online.

Attendance: As shared in our previous newsletter, attendance is a major focus in 2025. To date this year, we have an average student attendance of 92.2% which is positive - Well done. The link between attendance and achievement can be seen in the graph produced by ERO below. The students close to 100% attendance were getting on average 112 NCEA Level 1 credits and students with 80% attendance were more likely to get approximately 80 credits. It is great to establish excellent attendance habits as soon as possible in a child's schooling.



Eskdale Park Re-opening: It was wonderful to be part of the Eskdale Park Re-opening ceremony. A small team of House Leaders along with Miss Hill and myself joined the Hasting Mayor, local community members, and Council workers at the park to celebrate the Park's re-opening. Our leaders spoke well and shared some of their favourite memories from the park including the time we ran the Cross Country in hail and pouring rain. It was great to see so many of the old trees had survived the flooding. We look forward to using Eskdale Park again in the future and creating many more memories.



School Fees/Donations: We have been able to keep our school fees/donations the same again for the fourth year running.

Our 2025 school fees/donations are set at \$40.00 per student per term. These form an integral part of ensuring we can provide all the resources we want to for our students. The funds provided by the Ministry of Education do not cover all of the resources we believe are essential for every child to experience success.

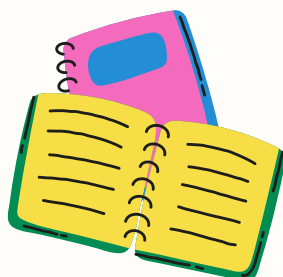
Over the past 12 months we have used the school donations for increased teachers in classes (reducing teacher to student ratio), increased literacy support time and purchased additional learning resources.

2025 Recommended School Fee/Donation: \$40.00 per term; or

- Individual Child \$160.00 per year discounted if paid in Term 1 to \$140.00.
- Two Children \$320.00 per year discounted if paid in Term 1 to \$280.00.
- Three or more children \$480.00 per year discounted if paid in Term 1 to \$420.00.

Thank you for your support with this.

Tristan



Eskdale School Absentees

A reminder that if your child is absent from school to contact the school office prior to 9.00am.

This can be done in a number of different ways:

Email: absence@eskdale.school.nz

Text: 021 114 5845

Phone: 06 836 6845 (option 1)

App: Skool Loop

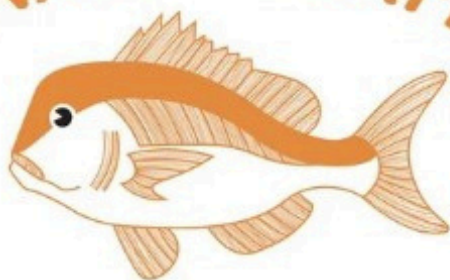
Eskdale School Sports

All sports notices and information regarding upcoming sports is displayed on our school website.

Any other Sport queries (eg Coastal Cluster) please contact
Kim Wallace:
kimw@eskdale.school.nz

Any Team Sport (out of school time) queries please contact
Maree Baird:
sport@eskdale.school.nz

SNAPPER CAFE



BAYVIEW

The perfect setting for coffee, breakfast, brunch or lunch!

We have a fully fenced courtyard that is both child and dog friendly as well as seating inside for those cooler days!

**Open Wednesday - Sunday
8.30am - 2.30pm**

**Show this advert and receive a HALF PRICE muffin
with any coffee purchased**

Located at Napier Beach TOP 10
10 Gill Road, Bay View



ESKDALE PRIMARY SCHOOL 2025 School lunches

TUESDAY – SUBWAY
THURSDAY – PITA PIT
FRIDAY – PIZZA

Order through lunchonline



If you need a Lunchonline account..

it's simple all you need to do is register an account at

www.lunchonline.co.nz

- 1. Login/Place an Order**
- 2. Create an account**
- 3. Add member/s include name, school and classroom number**
- 4. Under Lunch Orders - select student name - delivery date - start order**
- 5. You will be directed to the make a payment page, ensure you click 'submit'.**
- 6. A pop up will confirm 'your order has been successful' or check 'Order History' tab**
- 7. Any queries please call us on 0800 LOL LOL (0800 565 565)**

Explore, Learn, and Grow!

14 OneHunga Road

Eskview Tennis Club

HOLIDAY PROGRAM

TENNIS PROGRAM

Join our tennis holiday program. Your child will learn the fundamentals of tennis and have fun along the way.

Information

- 14th-17th of April
- \$160 for full four days
- 9am-12pm
- Ages between 5-12
- Text me to register your child

Information Contact:

Phone: 02040177575

My name is Kian Burkett, I am a tennis coach at Eskview Tennis club. Contact me with any questions.

